



# Year 1 Summer 2

## Beside the seaside



### History



How have seasides changed in the last 100 years? What could be the reasons for these changes?



### Arts and Design

Alfred Wallis



Lino printing

Use different sources to find out about the past - pictures, photographs, artefacts.

#### Key Vocabulary

modern  
 timeline  
 past  
 now  
 When I was little  
 before  
 long time ago  
 Compare and contrast

What does the object tell us about the owner?

- Monday 1st June, INSET day, school closed to children
- Friday 5th June, OPAL play day at 2 pm
- Wednesday 10th June, Class photos
- Saturday 20th June, Summer Fair
- Tuesday 23rd July, Bike Ability
- Friday 26th June, Sports Day
- Wednesday 1st July, Move up Day to Y2
- 13th - 17th July, STEM WOW week
- Wednesday 22nd July 1.30pm, End of term

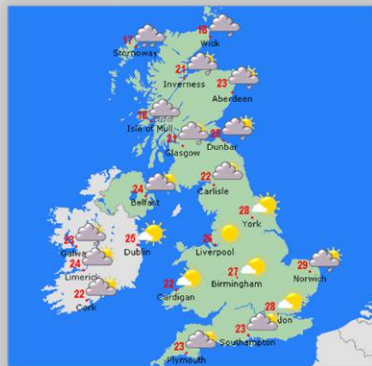
## Geography

using maps of the **United Kingdom** to identify the coast line and where are beaches.

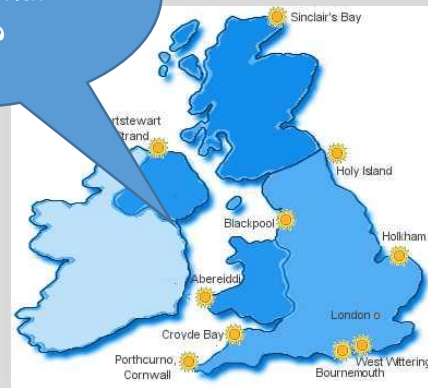
### Key vocabulary

coastline  
cliffs  
Coast  
Beach  
Sea  
Port  
Harbour  
Shop

Who's been to a beach and what did you see?



Weather forecasts



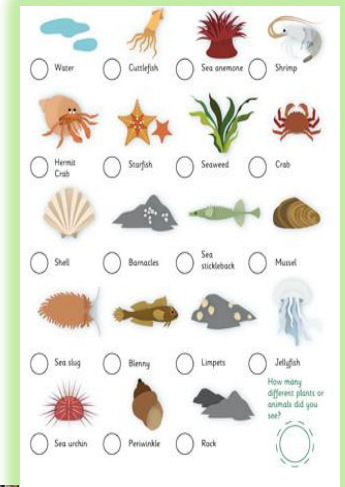
### Which items would you pack?



## Science

Working scientifically:  
Carry out simple experiments,  
record results, explain findings

What is damaging the rockpools and how can I help?



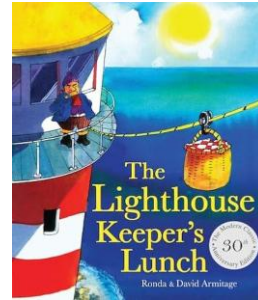
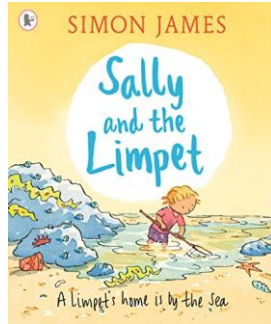
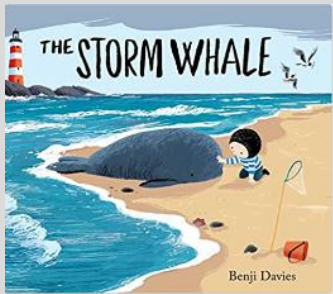
## Music

### Key vocabulary

Rhythm  
Tempo  
Percussion  
tuned

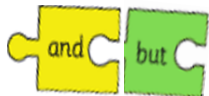


# English



joined writing

-est  
-ing  
-ed  
un-

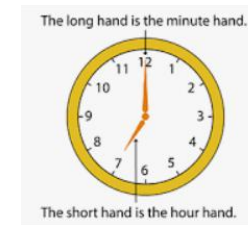
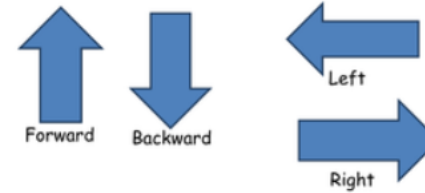


WOW words

## Key vocabulary

- poetry
- setting
- punctuation
- adjectives
- exclamation marks
- question marks

# Maths



## Key vocabulary

- Money
- coins
- half
- quarter
- o'clock
- half past
- direction
- position

# Physical Education

Athletics



Yoga



# Religious Education



Why do people tell stories?

# PSHE

School value



Transition to Year 2



Sun safety