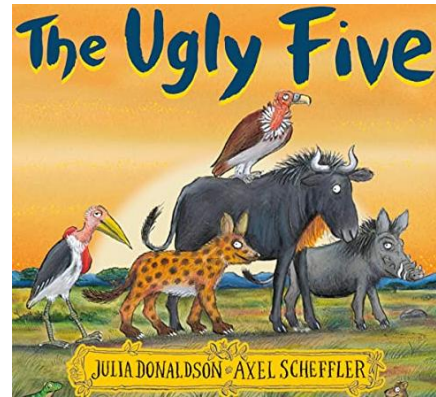
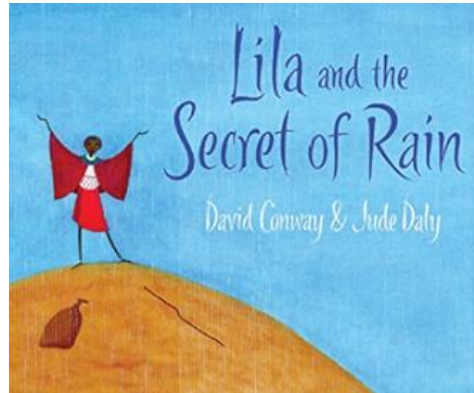




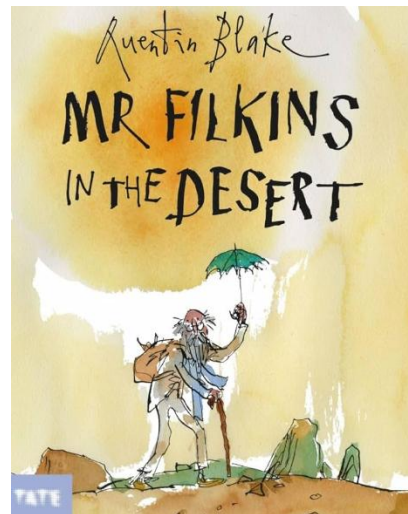
# Year 1 Spring 2

## Our Wonderful World - Sizzling Equator

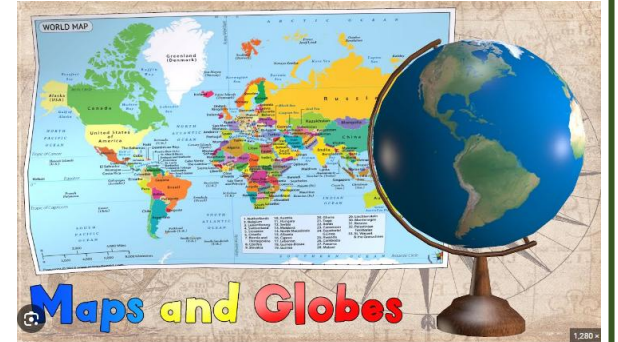
### English



Key vocabulary  
setting  
description  
Character  
suffixes -er -ing -  
ed -est



### Geography



Key vocabulary  
Equator  
landscape  
globe, atlas  
desert, rainforest  
hot areas of the world  
physical features

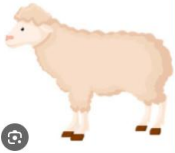
# Science

Planting seeds and observing seasonal changes.  
Spring  
Animals



## Herbivore

Animals that eat plants.



## Carnivore

Animals that eat meat.



## Omnivore

Animals that eat both plants and meat.



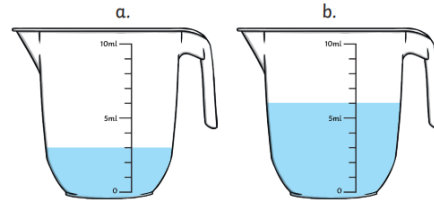
## Key vocabulary

Identifying features and structures of animals.

Naming common animals in desert and tropical regions.

## Place value within 50

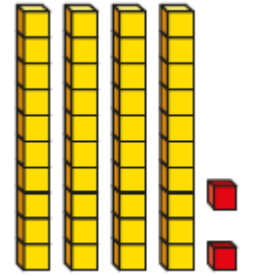
My number has four tens and 2 ones



## Length, mass and capacity



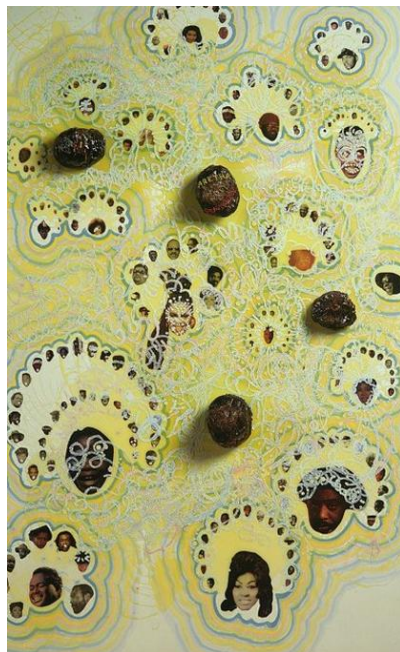
# Maths



## Key vocabulary

measure - millimetres and centimetres  
weigh  
mass  
Volume  
capacity

# Art



## Key vocabulary

pattern  
warm colour palettes  
collage  
pastel  
sculpture - texture and shape  
Artist Chris Ofili

# Music



## Key vocabulary

rhythm  
pitch  
pulse

# RE

What can we learn from the stories of Jesus?

## Key vocabulary

fable  
parable  
moral  
Message  
religious  
non-religious



# PE

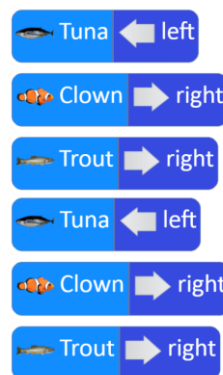
## Gymnastics



# Computing

## Key vocabulary

program  
Code  
Code blocks  
Execute  
edit



# Dates

Back to school - Monday 23<sup>rd</sup> February  
Parents' Evening - Tues 24<sup>th</sup> & Thurs 26<sup>th</sup> Feb  
Bedtime stories - Thursday 5<sup>th</sup> March  
World Book Day - Friday 6<sup>th</sup> March  
Badger Class Assembly - Thursday 19<sup>th</sup> March at 2.25 pm  
End of Term - Friday 27<sup>th</sup> March at 1.30 pm

